

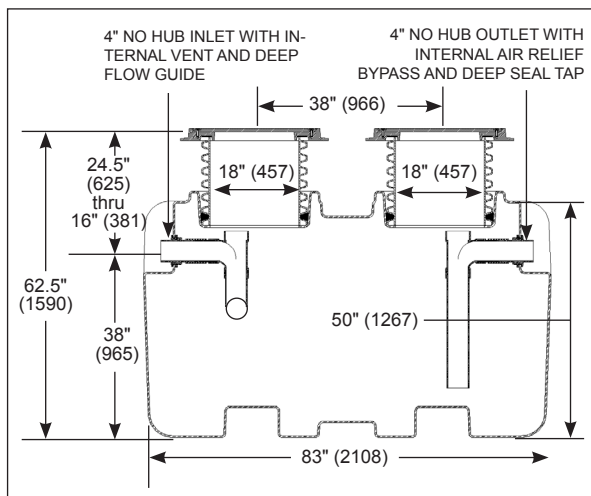
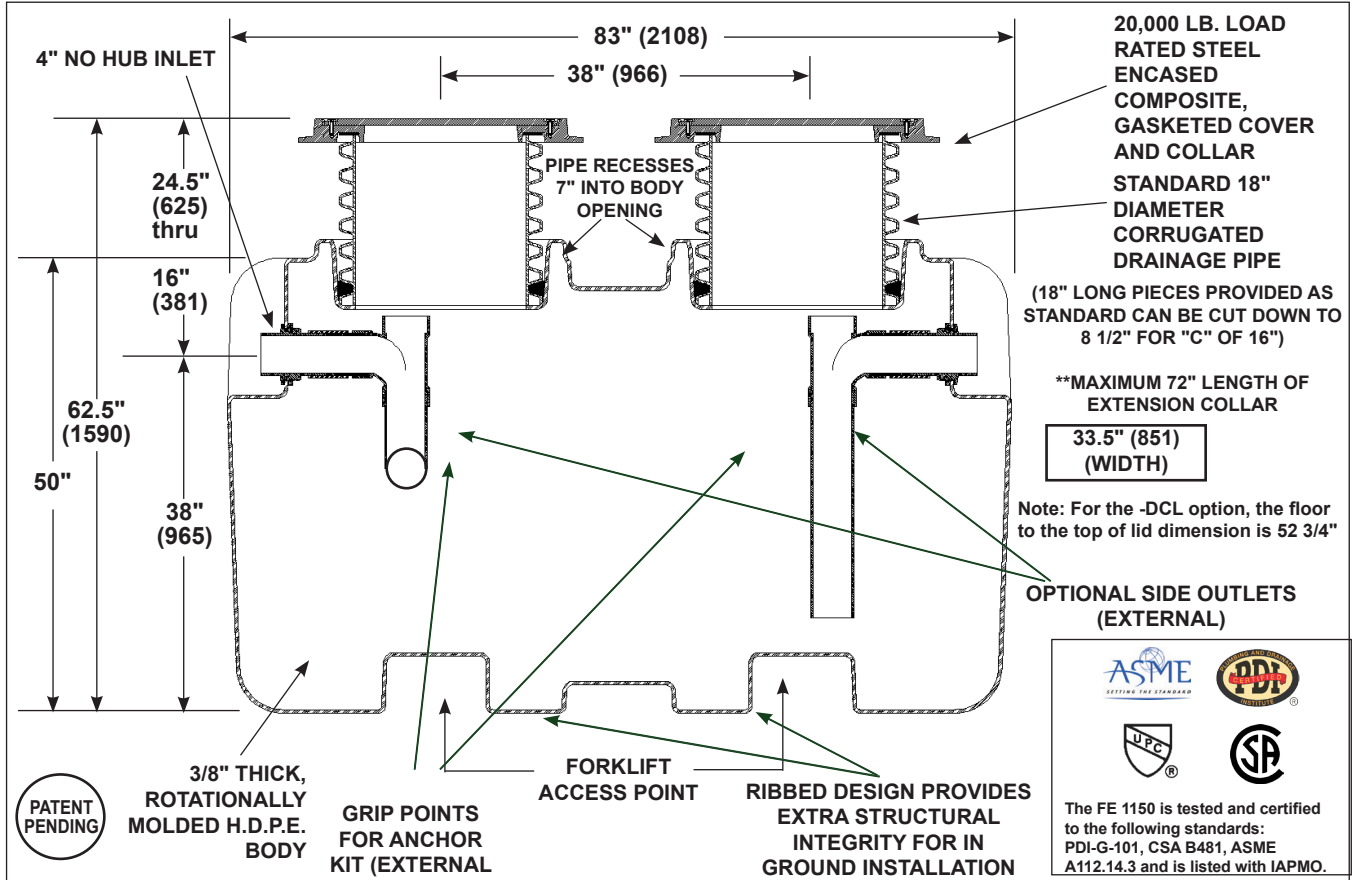
Project Name: _____

FOG Enforcer FE 1150

LARGE CAPACITY HDPE HYDROMECHANICAL GREASE INTERCEPTOR

Specification: F O G E N F O R C E R FE1150, 100 GPM hydromechanical grease interceptor with 1,150 lb. grease design capacity. Interceptor has a limited lifetime warranty and is made in the USA out of seamless, rotationally molded High Density Polyethylene lid system, internal flow control, sample port access, and multiple outlet options. Steel encased composite lid provides a water / gas tight seal and have a minimum of 20,000 lbs. load capacity. The lid is designed in accordance with the loading requirements of AASHTO H20.

Function: Used in restaurants, kitchens, institutions, industrial facilities such as food processing and packaging plants and other types of food processing areas where fat, oil and grease (FOG) drains with the wastewater. Narrow width permits access through doorways and down stairwells. High Density Polyethylene construction ensures a lightweight installation process (two people can move and install it).



*Note: The FE 1150 does not meet PDI standard if outfitted with an internal flow control (-OP suffix). The PDI standard is only valid for the external flow control fitting.

MODEL NO.	GPM (Flow Rate)	GREASE DESIGN CAPACITY (Lbs.)	LIQUID CAPACITY (GAL)	SHIPPING WEIGHT (Lbs.)
FE 1150	100	1,150	300	275

- SUFFIX**
- AK High water anchor kit (set of four)
 - C Lid extension (specify "C" dimension required) (Max. of 72")
 - CL Holdown brackets for lid (when installed above ground)
 - DCL Direct Connect Lid (lid bolted to top of body)
 - DI Ductile iron lid & collar
 - FL-C Membrane clamp kit
 - F6 6" No Hub Inlet / Outlet connection
 - HLA High level alarm
 - LHSI 4" no hub inlet on left hand side
 - LHSO 4" no hub outlet on left hand side
 - OP Internal flow control*
 - RHSI 4" no hub inlet on right hand side
 - RHSO 4" no hub outlet on right hand side
 - SP External Sample Port (for existing construction. Inlet and Outlet on the same level)
 - SP-OF External Sample Port (for new construction. Inlet higher than the outlet).
 - T Female threaded connections



Job Name: _____
 Section No: _____
 Schedule No: _____

Page No: _____
 Contract: _____
 Purchase Order No: _____